



Living and Bedroom
Ventilation Systems

LIVING AND BEDROOM VENTILATION SYSTEMS



VORTICEMOULDSOLUTIONS.CO.UK





Vortice Limited is a part of a multinational group employing over 400 employees worldwide. Established in the UK since 1977, Vortice has over 100 years combined knowledge and service in combatting mould and condensation in social housing.



AER HR 100

DECENTRALISED SINGLE ROOM HEAT RECOVERY UNIT



FEATURES

- **Sleek & Attractive:** Modern, low-profile design to compliment any home
- **Smart Circulation:** Alternate flow technology ensuring optimal ventilation effectiveness
- **Energy Saving:** The heat retention core will pre warm incoming air to provide maximum comfort
- **Whisper-Quiet:** Near-silent operation, preventing unwanted noise and encouraging continuous use
- **Flexible Application:** Can be used in a single room or as part of a co-ordinated ventilation strategy



AER HR 100



APPLICATION

- The AER HR 100 is decentralised alternate flow with heat retention ventilation system for use in a single room such as a bedroom or living room. Designed to extract and supply air to rooms in an energy efficient way, the system is ideal for improving indoor air quality and reducing the risk of condensation and mould growth.

OPERATION

- The AER HR 100 system alternates airflow between supply and extract ventilation modes every 70 seconds. In extract mode the systems high efficiency ceramic heat retention core gathers and stores heat. In supply mode the majority of this stored heat is transferred to the incoming air resulting in a more comfortable and stable internal environment. This method of ventilation can be applied to a single room or matched with other systems to form part of a co-ordinated approach to improve ventilation in the home. Each system has multiple speed settings which are set at installation stage to ensure the exact performance requirements are met.

FEATURES/BENEFITS

- Aesthetic and modern front cover easily removed for cleaning and inspection.
- Alternate flow with flow reversal approximately every 70 seconds.
- Free cooling to prevent heat exchange when not requested.
- Integral led to indicate when the “free cooling” option is active.
- Simplified synchronisation of the units.
- 5 year product warranty.
- Easy maintenance of all parts including the heat exchanger.
- Totally recyclable plastic components, environmentally friendly.
- Double insulated: no earth connection is required.
- Tested to the latest standards meaning accurate, up to date information on electrical safety, performance and noise level that can be relied upon.
- Designed and manufactured in accordance with EN60335-2-80 (Low Voltage Directive) and the EMC Directive (electromagnetic compatibility)
- IPX4 rated.
- Environmentally friendly, all plastic components fully recyclable.
- Double insulated therefore no earth connection is required.



Looking for a supply and install service?

BOOK A SURVEY TODAY
www.vorticemouldsolutions.co.uk



PRODUCT RANGE AND CODES

PRODUCT	CODE
AER HR 100	12430
AER HR 150	12459

INSTALLATION

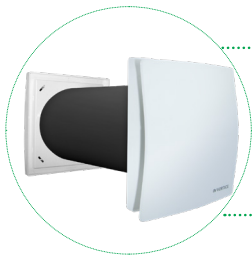
For installation in single rooms such as living rooms and bedrooms two units are commonly used in parallel operation to ensure better flow balancing, having opposite and synchronised flows. Suitable for mounting on perimetral walls.

CONSTRUCTION

- Casing made of high quality ABS provides long lasting, shock-proof and robust construction. The unit is finished in white RAL 9010 and is UV resistant.
- Unique design impeller, providing low noise and increased efficiency.
- EC brushless motor with integral thermal protection, mounted on sealed-for-life high quality ball bearings to assure a longer fan life and ideal also for cold climates.
- Stator with aerodynamic deflectors to reduce air turbulences and designed to maximise performance and efficiency.

TESTING AND CERTIFICATION

Units are tested to ensure accurate, up to date information on electrical safety, performance and noise level that can be relied upon. Designed and manufactured in accordance with EN60335-2-80 (Low Voltage Directive) and the EMC Directive (Electromagnetic Compatibility).



AER HR 150
6" single room
heat recovery unit



RESIDENTIAL VENTILATION

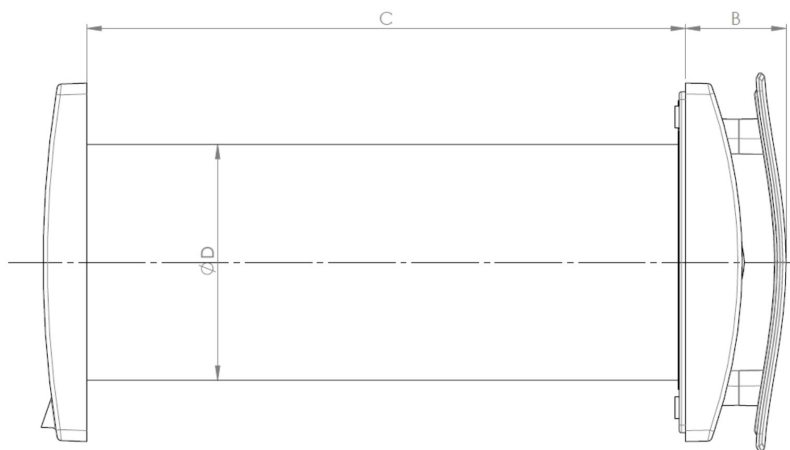
LIVING AND BEDROOM VENTILATION SYSTEMS

PERFORMANCE

PRODUCT	CODE	W min med max	AIRFLOW (l/s) min med max	Lp dB (A) 3m ⁽¹⁾ min med max	WEIGHT KG
AER HR 100	12430	1.2 1.7 2.6	3 4 7	10 15 29	2.3

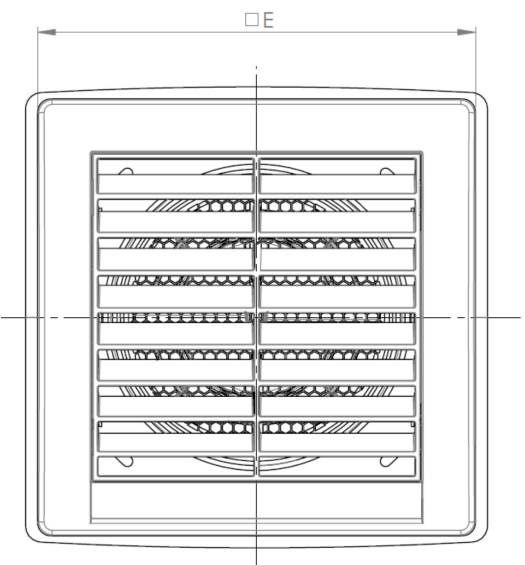
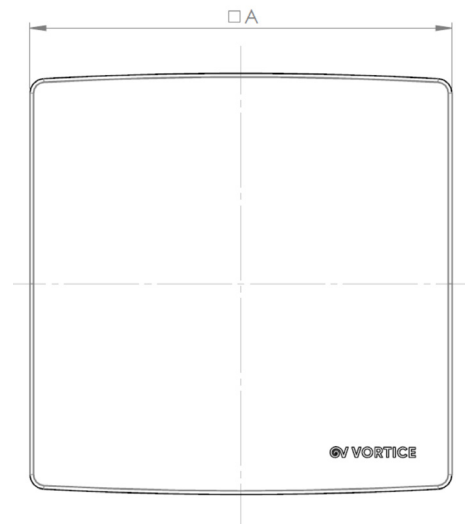
- 220-240V ~ 50/60Hz
- air performance measured according to ISO 5801 @ 230V ~ 50Hz, air density 1,2Kg/m³.
- (1) sound pressure level @ 3m in free field, for comparative purposes only.

DIMENSIONS



A	B	C	D	E
173	46	300 - 570	109	164

Dimensions in mm

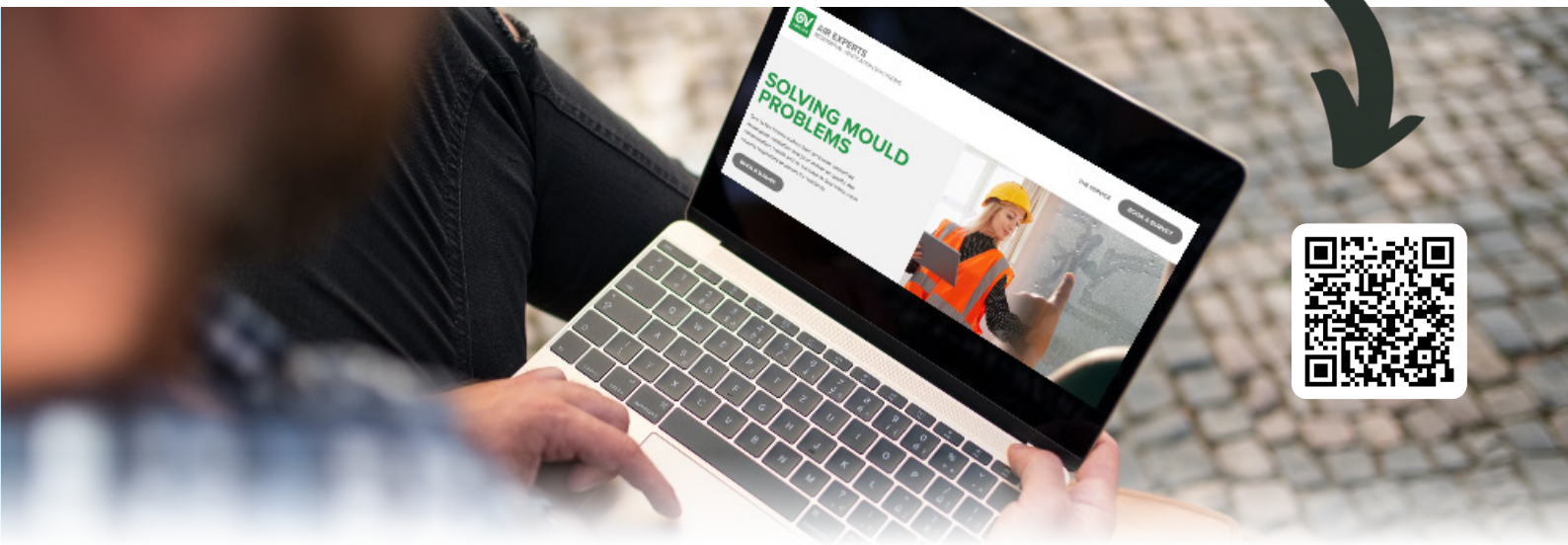


AER HR 150
6" single room
heat recovery unit





BOOK A SURVEY TODAY !



www.vorticemouldsolutions.co.uk

CERTIFICATION AND ACCREDITATION

- All Vortice products are accredited to ISO 9001.
- Vortice confirm regulatory compliance by notifying Local Authority Building Control.
- Issue the housing provider with a building regulations compliance certificate as well as any electrical minor works certification.
- All products provided in accordance with latest electrical legislation UK/CA and CE marks.

MEMBERSHIP

Vortice is a proud member of Property Care Association, Residential Ventilation Association, Contractors Health and Safety Assessment Scheme and Federation of Environmental Trade Associations.



Visit

www.vorticemouldsolutions.co.uk
Tel: 01283 492949 - Email: socialhousing@vortice.ltd.uk

VORTICE GROUP

VORTICE LIMITED

Beeches House
Eastern Avenue
Burton upon Trent
DE13 0BB United Kingdom
Tel. 01283 492949
socialhousing@vortice.ltd.uk
vorticemouldsolutions.co.uk

The descriptions and illustrations in this catalogue are intended to be indicative and not binding. Without prejudice to the essential characteristics of the products described and illustrated here, Vortice reserves the right to make, at any time and without notice, any changes to parts, aesthetic details or supply of accessories to its products that are deemed to be appropriate for improvement or for any construction or commercial requirement.

This printout completely cancels and replaces all previous ones.
Subject to Vortice standard terms and conditions

February 2024

